

Classical elements from Home & Apartment Trends volume 2301

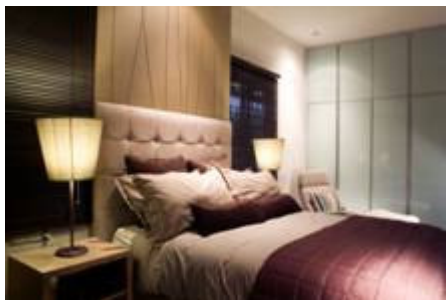


Here's a challenge: decorate in a clean, contemporary fashion, while indulging the owners' love of Oriental elements, and find storage for a large collection of objets d'art within a 280m2 dwelling.

Such was the interior designer's brief from the owners of this house. Principal designer of TDC & Associates, L.H. Chan and his team solved the storage issue by designing a contemporary, glass-fronted showcase for the living area.

"This successfully displays the owners' collection without cluttering the room," he says. Further storage is concealed behind the mirrored door with the Oriental lattice design, at right of the showcase, and in the wall behind the television.

"In the dining area, a mirror behind the low wall reflects the garden and visually enlarges the room," he says.



"In all of our projects, we work with the client, as a team, to achieve a desirable result."