

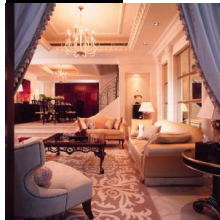
FUSION OF STYLES



TDC & Associates has long-standing reputation for distinctive designs and attention to detail. Approaching design from the standpoint that everyone should be able to realise their interior aspirations, they've focused for the past years on bringing some of the region's best design and on-site execution within the reach of a wide range of residential and hospitality owners. A long-standing member of the International Interior Design Association (San Francisco), TDC has since created countless homes and crafted unique style for some the region's most discerning clients.

TDC & Associates start each project by finding what makes their clients react, and then translate the elements into a living space. One of the places that's most visible is in their marquee fusion designs. Approaching fusion is like stepping into a strange country, where in a single instant – the smells, sights and sounds seem so foreign to you, but at the same time, have a pattern all their own, into which they each have a place and a perfect fit. There's an intrinsic beauty, even in what might at first seem chaotic. From that perspective, a good interior consultant would approach the design of a fusion space with an intimate understanding of the inhabitants.

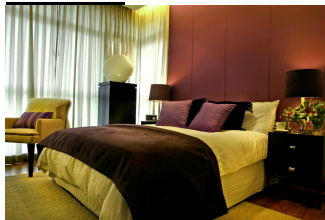
CLASSIC



When it comes to classical interiors, it's all about the balance of fantasy and power, both masculine and feminine at the same time. There, spaces are defined with strong lines, vivacious curves and gilded ornaments and a dash of history. Those with classical homes ooze confidence, as it reiterates someone's high status in life. Like the delicate Florentine cornices or the bold Chippendale ottoman, it's the little details that make the classical style every bit reflective of its owner.

Understanding the intuitive nature of clients' desires for comfort, quality and a home they can be proud of for years to come, no matter what fads or styles come and go, TDC realises the key a truly great classical home begins with a perfect balance and understanding between the design team and the home owner.

MODERN



Above all, the modern interior is about function over form. Multi-functioning walls and discreet cupboards all hide the practicalities of life; one moment an empty space, and in the next, a working room. The modern interior reflects today's modern society; where beneath a simple exterior lies a more complex character.

Whether it's a taste for classical, fusion or modern, the one thing that unites all discerning home owners is a desire for quality and style. While the basis function of a house is shelter, there is an art to transforming a collection of ideas into a home. From the beginning of the design process to the end result, TDC has worked side by side with their clients for the past years, taking their ideas from the drawing board and making them a reality.