

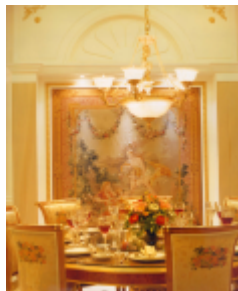
Extracts from Decorations Year Book 2005

ELEGANCE IN GRANDEUR

A long entrance hallway leads the way into the realms of formal elegance. Flanked by the left and right wings of the house, the inner foyer is the midpoint where one can choose to proceed to different areas. Having lived in Europe for many years, the owners have always resided in home done in classical style.



The living room features an immense piece of hand-woven tapestry art, creating a visually delightful focal point. An emphasis on the height is played up, a consistent element throughout the entire house by the eloquent usage of pillars and arches. The formality of the environment is stressed upon, evident in the space planning of the area, whereby one steps into the mini-foyer from the hallway before entering the actual living area. Intricate details and motifs adorn the cornices, ceilings, doors, timber panelling etc throughout the house. Every inch of the wall is finished in luxurious panelling spray paint, or wallpaper.



Rich creams and wine red compose an elegantly striking living area, regal and warmly beckoning. Wall panelling in ivory with the golden yellow wallpaper create a fluid continuity from the walls to the floors, which are in delicious Asian yellow marble. The uniformity forms a simple grandeur which is effective and uncomplicated.



Maintaining the atmosphere of brightness and airiness, the dining room has full height glass door which overlooks the pool area outside. Simple elegance best describes this enchanting space, with its centrepiece of hand-woven tapestry framed by intricate detailing and delicate motifs. Tall windows follow the form of the doors, with similar arches and motifs.